



Conjunto  
Santander<sup>®</sup>  
de Artes Escénicas

Universidad de Guadalajara



UNIVERSIDAD DE  
GUADALAJARA

Red Universitaria e Institución Benemérita de Jalisco



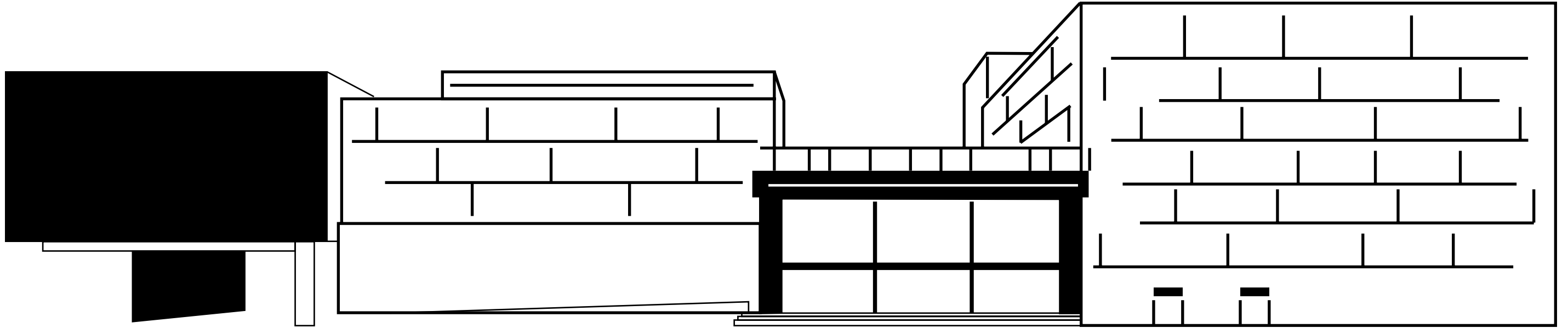
centroculturaluniversitario



 Santander



 Conjunto Santander<sup>®</sup>  
de Artes Escénicas



**PAGE INDEX**

<b>09</b>	Santander Performing Arts Center
<b>10</b>	Plácido Domingo Hall
<b>14</b>	Hall 2
<b>18</b>	Hall 3
<b>22</b>	Hall 4
<b>26</b>	Ágora Jenkins
<b>28</b>	Café - Concert
<b>30</b>	Rehearsal Room
<b>31</b>	Event Hall



Lago de los Cisnes



**Conjunto  
Santander®**  
de Artes Escénicas

The venue opened its doors on October 21, 2007 with the aim of gathering art from all over the world in just one space. Following the mission of the University of Guadalajara, promoting cultural growth through the creation, management and broadcasting of artistic and cultural projects that promote our state.

Music, theater, dance, opera, conferences, fairs and festivals, workshops and master classes are activities that have positioned this property as a landmark in our country and as one of the most attractive and versatile cultural ensembles in Latin America.

It is the venue for important events such as the Guadalajara International Film Festival (FICG), the International Book Fair (FIL) and *Papirolas*, the Cultural and Educational Festival for Children and Youth, making this venue a meeting point for the artistic community. National and international.

Let yourself be enveloped by the Performing Arts, dare to discover the place where emotions live.

**PLÁCIDO DOMINGO HALL**



# PLÁCIDO DOMINGO HALL

## 1,700 assistants

Inaugurated on October 21 2017, by the imposing figure of *Bel Canto* Plácido Domingo

### Datasheet Summary

- Open stage of 17 mts wide x 12 mts high. Box stage 19 mts deep
- Height of grid 26 mts
- Trapdoors: 14 x 8 mts
- Orchestra pit for 120 musicians
- 58 variable speed automated battens
- Acoustic shell
- 3 front lightning bridges
- Last seat distance at 35 mts



Plácido Domingo

Javier Camarena

HALL 2



## HALL 2

### 930 assistants

Inaugurated on November 02, 2017 with **Tomaž Pandur's *Fausto*** based on the work of **Goethe**

#### Datasheet Summary

- Open stage of 16.5 mts wide and 12 mts high. Box stage 18 mts deep
- Height to grid 26 mts
- Trapdoors 14 x 8 mts
- Orchestra pit for 90 musicians
- 52 counterbalance battens
- 2 front lightning bridges
- Last seat distance 29 mts



HALL 3



## HALL 3

### 430 assistants

Inaugurated on October 24<sup>th</sup>, 2017 with **Ballet National de Marseille** 's *Rocco*

#### Datasheet Summary

- Stage area 425 m<sup>2</sup>
- Measurements: 25 mts long x 17 mts wide and 10 mts height from floor to lighting bridges
- Trapdoors: 9 mts long x 7 mts wide and 1 m deep
- 8 lighting bridges, 2 catwalk, proscenium grill and technical booth
- Elevator and service lift
- 5 dressing rooms for 30 people
- Retractable seats for 430 people on 360° format



HALL 4



## HALL 4

### 200 assistants

Inaugurated on November 1<sup>st</sup> 2017, with **Teatro Motus's** *Elisapi y las auroras boreales*

#### Datasheet Summary

- Performing space of 16 x 9 mts with three perimeter balconies
- Height to grid 8 mts
- Loading grid
- Retractable seats for 200 people
- Balcony with the capacity for 84 people
- Dressing room for 12 people



Teatro Motus's *Elisapi y las auroras boreales*



*El Diccionario*

# ÁGORA JENKINS



Natalia Lafourcade



Música Picnic

## ÁGORA JENKINS

800 assistants

Inaugurated on November 24<sup>th</sup>, 2017 with the concert of Leiden and La Garfield

### Datasheet Summary

- 938 mts<sup>2</sup>
- Outdoor space
- Conditioned for films, theater and dance performances

# CAFÉ - CONCERT

## CAFÉ - CONCERT

160 assistants

### Datasheet Summary

- Restaurant with capacity of 160 people (388 m<sup>2</sup>)
- Lounge room 40 m<sup>2</sup>
- Bar
- Kitchen 70 m<sup>2</sup>
- Restrooms
- Elevator and service lift
- Administrative office



## REHEARSAL ROOM

### Datasheet Summary

- Measurements: 12 mts x 16 mts and 8 mts high
- Air conditioner



## EVENTS HALL

### Datasheet Summary

- Measurements: 10 mts x 30 mts and 7.4 mts high
- Air conditioner





 ConjuntoSantander

 ConjSantander

 ConjuntoSantander

 Conjunto Santander

 Conjunto Santander

[contacto@conjuntosantander.com](mailto:contacto@conjuntosantander.com)

[www.conjuntosantander.com](http://www.conjuntosantander.com)

Av. Anillo Periférico Norte No. 1695  
Col. Parque Industrial Belenes Norte  
Zapopan, Jalisco  
CP 45145



UNIVERSIDAD DE  
GUADALAJARA

Red Universitaria e Institución Benemérita de Jalisco



centroculturaluniversitario